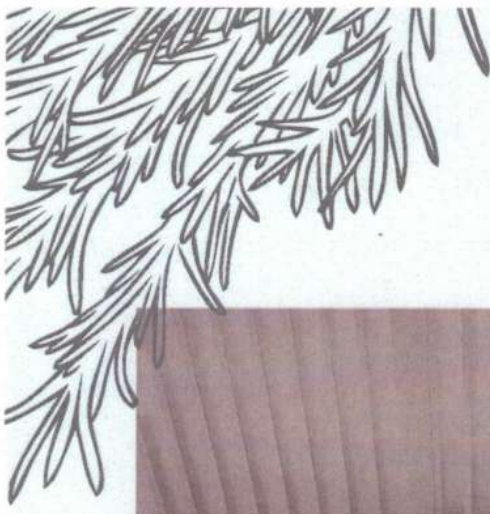


Câmara Municipal da Estância
Turística de Olímpia

REFORMA DE SANITÁRIOS

ACABAMENTOS - PISOS E REVESTIMENTOS.

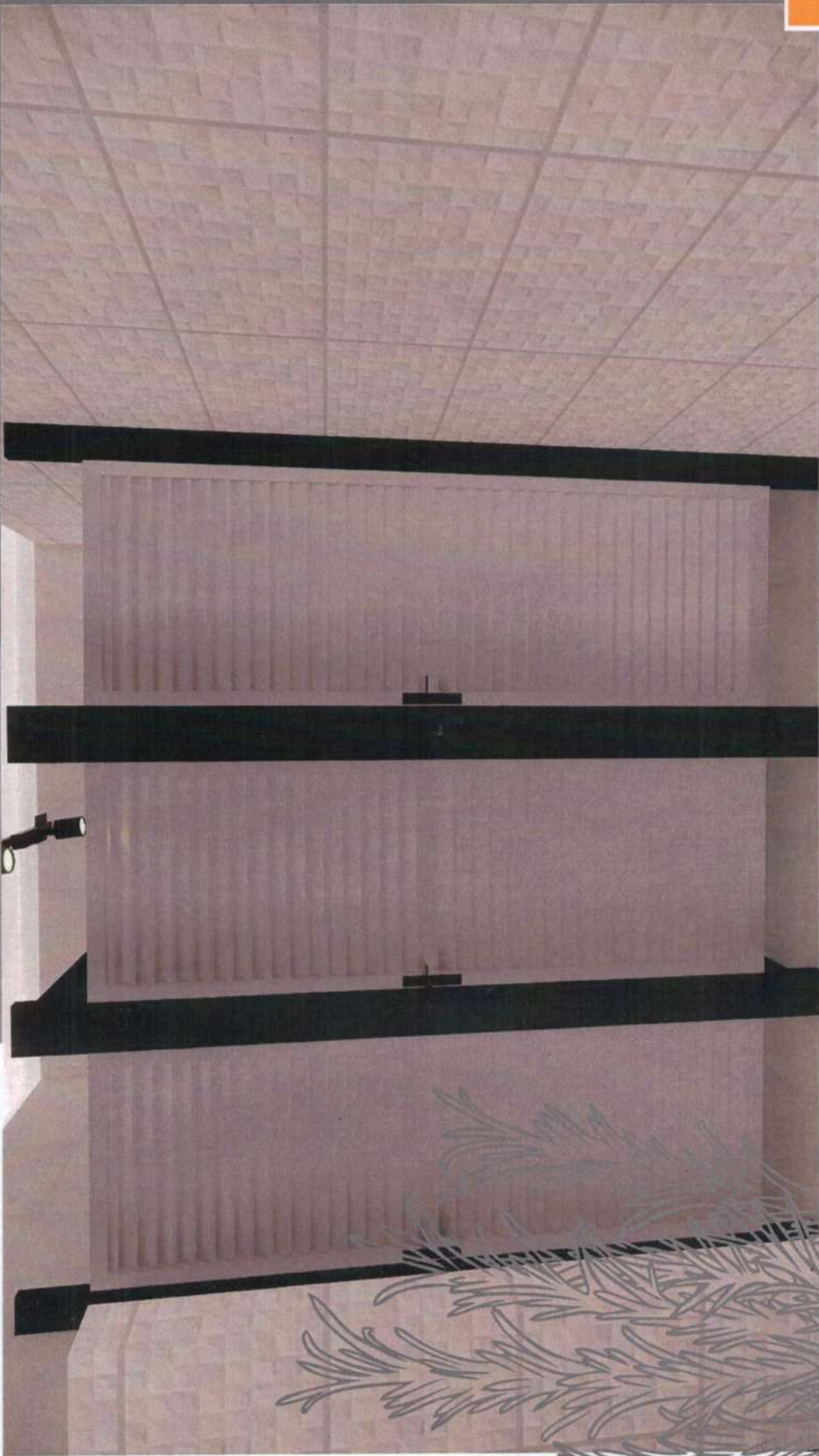
ANEXO VIII



Banho Feminino

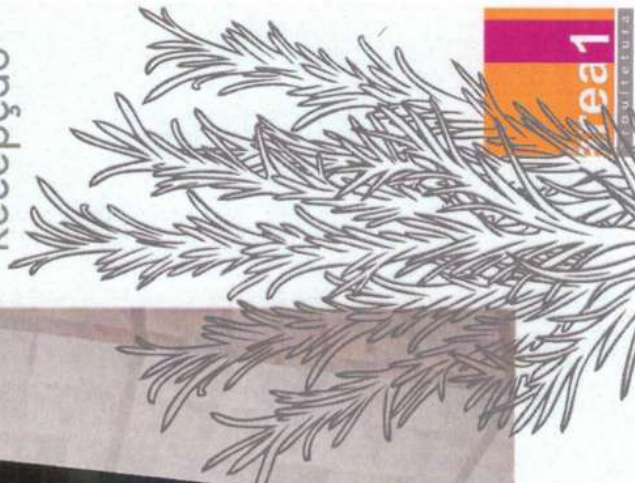
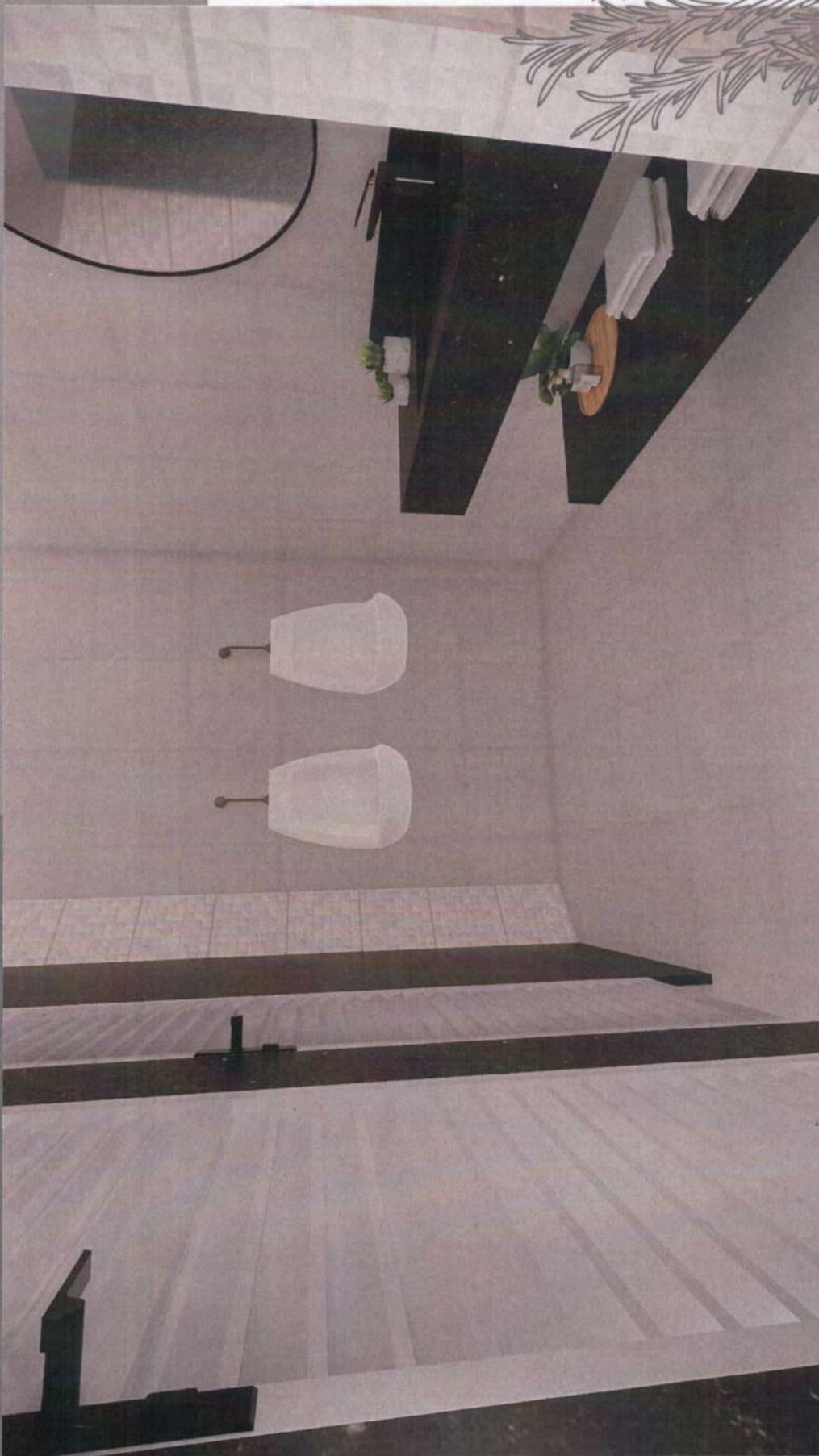
Recepção

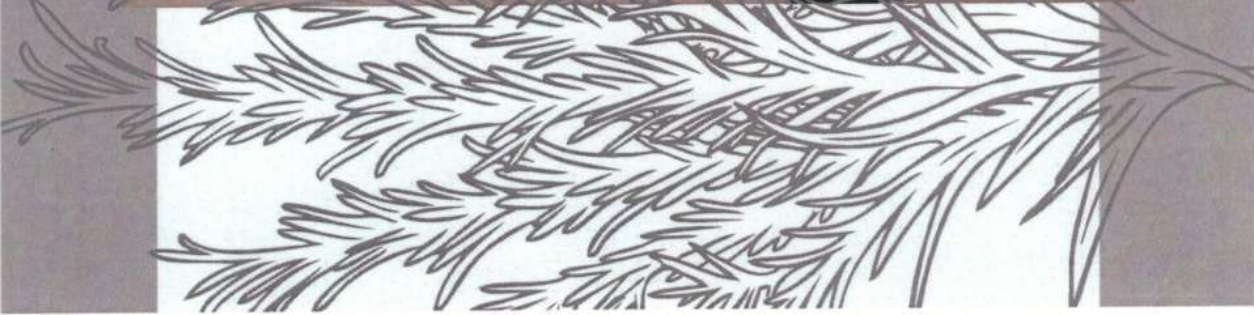




Banho Masculino

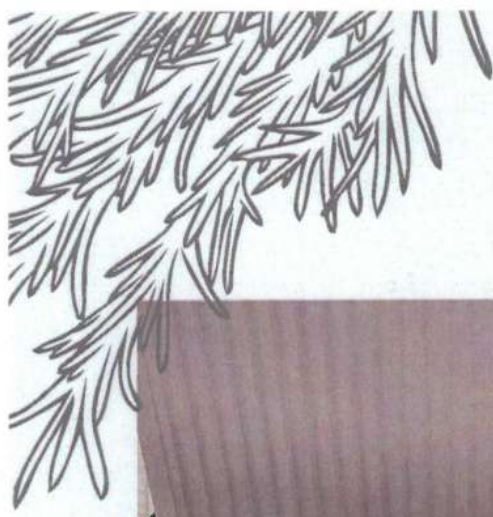
Recepção





Banho Feminino

Interno





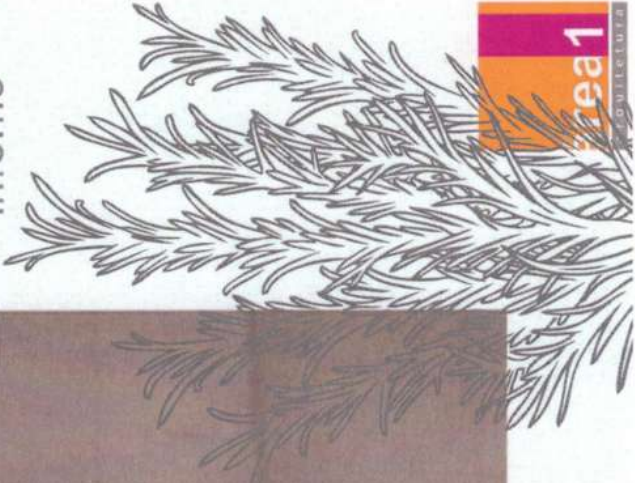
Banho Masculino

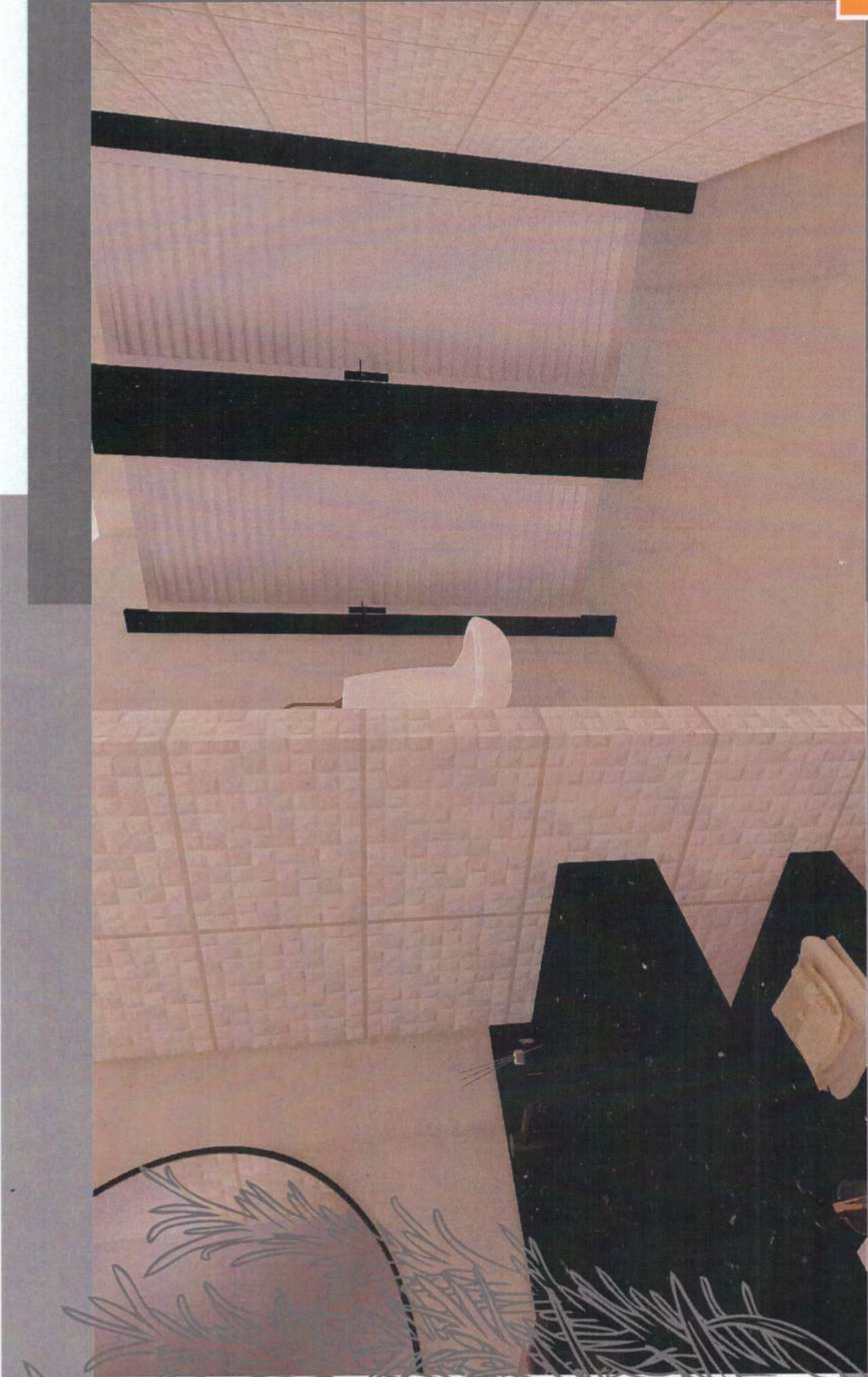
Interno



area1

CONSTRUTORA

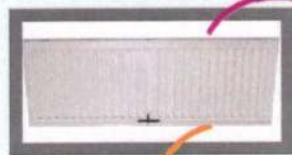




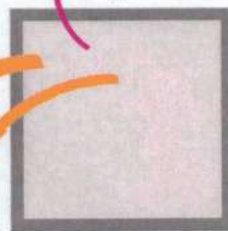
PISOS E REVESTIMENTOS



Porta de
Alumínio



Incepa
SM Grigio Acetinado
44.5 X 44.5



Majopar
HD 4072
32 X 57



Granito Verde
Ubatuba
(pia esculpida e
prateleira)

